

Data subject to change without prior notice  
Edition 03/2020 © 2020 JMG Cranes S.p.A. All rights reserved  
Rev.1 - 03/20



## Electric Pick & Carry Cranes

### JMG Cranes S.p.A.

Sales & Service Office

Via Bergamo, 142

26100 Cremona - Italy

t +39 0372 1786738

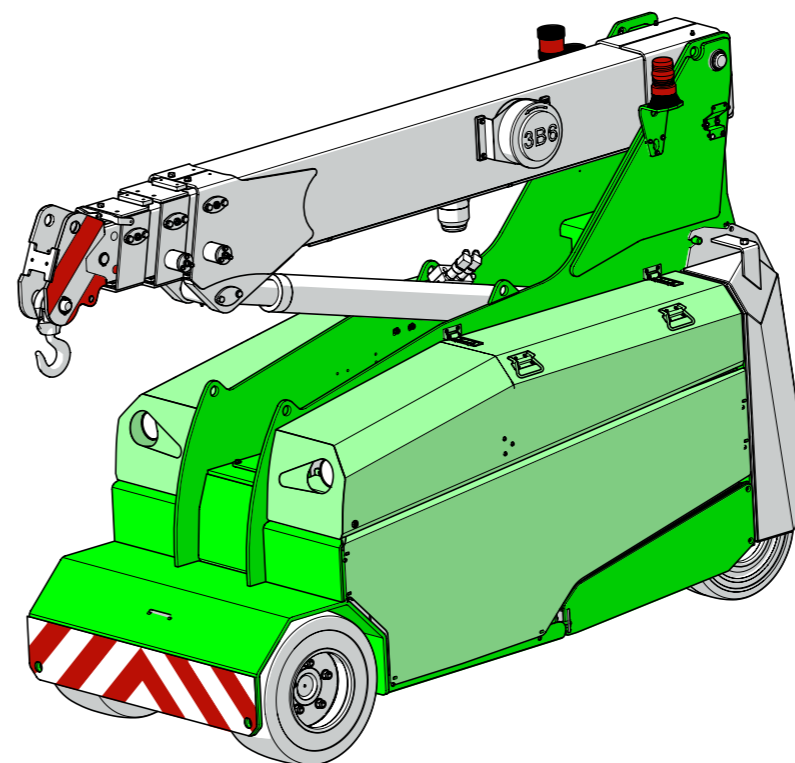
Production Plant

Via Sito Nuovo 14

29010 Sarmato (PC) - Italy

t +39 0523 8486

e info@jmgcranes.com



**MC 32S (inch)**  
Max Capacity 7,000 lbs

[www.jmgcranes.com](http://www.jmgcranes.com)



RADIO-REMOTE CONTROL ON DRIVING, STEERING, BOOM MOVEMENTS, WINCH AND OTHER ACCESSORIES

FRONT-WHEELS DRIVE WITH COUNTER ROTATION

REMOVABLE COUNTERWEIGHTS

HYDRAULICALLY TELESCOPING SEQUENTIAL TYPE BOOM

**Options :**

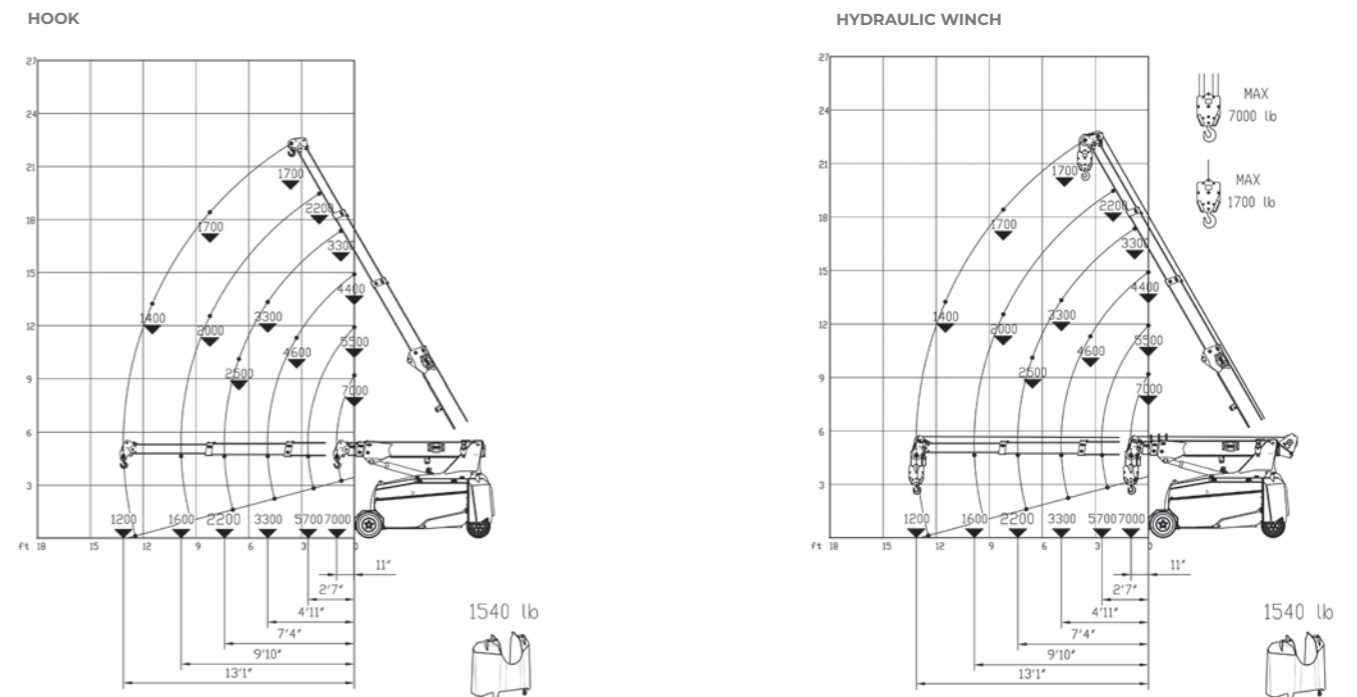
- HYDRAULIC WINCH
- HYDRAULIC FLY JIB
- MANUAL FLY JIB WITH EXTENSION
- NON-MARKING TIRES
- HYDRAULIC FORKS
- MAN BUCKET
- ATEX CONVERSIONS
- CUSTOMIZED PAINTING



**Technical features**

Max Capacity lbs	7,000	LMI	Electronic safe load indicator and tilting moment limiter
	Dimensions inch		7'11"x3'2"x5'7"
Front wheels drive		2 electric motors AC 3 kW 48V Insulation class H	Fabricated from preformed and welded quality steel plate
	Total lbs 7,500 Removable counterweights lbs 1,550	+60°-15°	
48 V - 500 Ah 8 working hours	Front nr. 2 superelastic 200/50-10" Rear nr. 2 superelastic 16x6-8"	Motor driven pump 9 kW - 48 V AC, Insulation class H	
Rear Steering angle -90°/+90°			

**Load charts**



**EU Standards CE**

	UNI ISO 4030-1: A1
	2006/42/CE- 2000/14/CE -2014/30 UE 2014/35/UE - D.Lgs 262/2002 subsequent modifications
	EN 13000:2014 subsequent modifications

**Dimensions**

