

Data subject to change without prior notice  
Edition 03/2020 © 2020 JMG Cranes S.p.A. All rights reserved  
Rev.1 - 03/20

## JMG Cranes S.p.A.

Sales & Service Office

Via Bergamo, 142

26100 Cremona - Italy

t +39 0372 1786738

Production Plant

Via Sito Nuovo 14

29010 Sarmato (PC) - Italy

t +39 0523 8486

e info@jmgcranes.com



## Electric Pick & Carry Cranes



**MC 300S (inch)**  
Max Capacity 66,000 lbs

[www.jmgcranes.com](http://www.jmgcranes.com)



# MC 300S

RADIO-REMOTE CONTROL ON DRIVING, STEERING, BOOM MOVEMENTS, WINCH AND OTHER ACCESSORIES

HYDRAULICALLY TELESCOPING PROPORTIONAL TYPE BOOM

FRONT-WHEELS DRIVE WITH COUNTER ROTATION

FRONT COMPASS TYPE OUTRIGGERS

HYDRAULIC HEAD

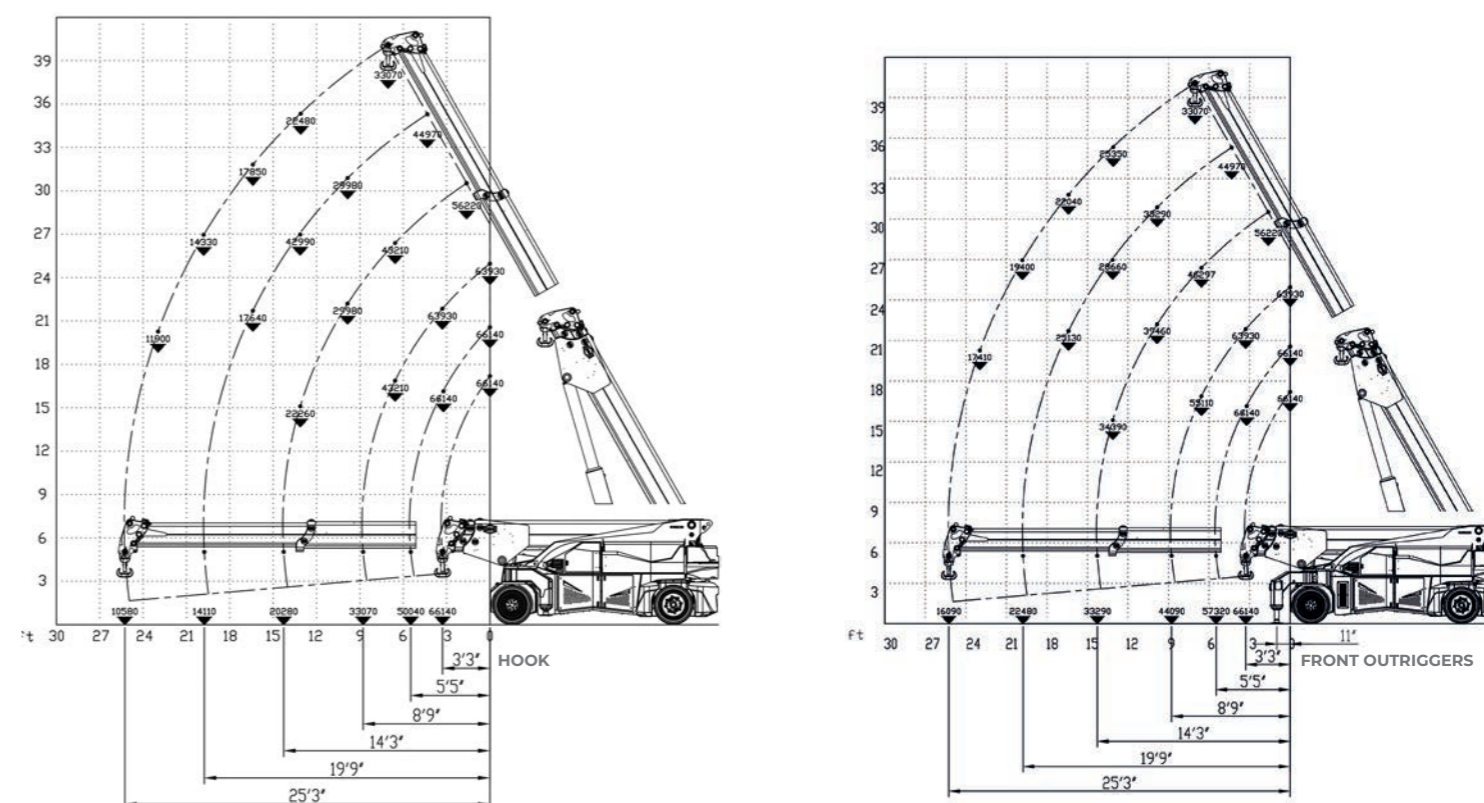
REMOVABLE COUNTERWEIGHTS

### Optionals:

- HYDRAULIC WINCH
- HYDRAULIC JIB WITH HYDRAULIC EXTENSION
- NON-MARKING TIRES
- HYDRAULIC FORKS
- ATEX CONVERSIONS
- CUSTOMIZED PAINTING



### Load charts



### Technical features

Max Capacity lbs	66,000
Dimensions inch	15'9" x 7'41" x 7'3"

Front-wheels drive. 2 electric motors AC 12 kW 96V. Insulation class H	LMI. Electronic safe load indicator and tilting moment limiter
Total lbs 65,100 Removable counterweights lbs 19,100	Automatic braking system on all wheels
96 V - 1125 Ah 8 working hours	Fabricated from preformed and welded quality steel plate
Front n.4 superelastic 355x50-20" Rear n.4 superelastic 355x50-20"	+60°/-5°
Rear Steering angle -90°/+90°	Motor driven pump N°2 23 kW - 96 V AC, 16 kW - 96 V Insulation class H

### EU Standards CE

	UNI ISO 4301-2: A1
	2006/42 CE-2014/30 UE-2014/35 UE- 2000/14 et modifications suivantes
	EN 13000:2014 ANSI/ASME B30.5-2011 et modifications suivantes



### Dimension

